



Tasman Council

2000 election report

Table of contents

- Local Government Elections in Tasmania
- Report on the 2000 Tasman Council Election
- List of Councillors following the 2000 elections
- Councillor results
- Mayor & Deputy Mayor results

Local Government Elections in Tasmania

Every second (even) year elections are held in all 29 councils for the positions of mayor and deputy mayor and half the councillor positions. Where required, by-elections are held concurrently for vacancies that have occurred since the last elections.

The Tasmanian Electoral Office (TEO) supervises the conduct of elections in accordance with the *Local Government Act 1993*. Elections by postal ballot have been held in 1994, 1996, 1999 (deferred from 1998) and 2000, with the next elections due in October 2002.

Following recent changes to the Act, mayors and deputy mayors were elected directly by the electors in each municipal area for the first time in 2000.

Candidate information booklets and complete election results for the state are available from the TEO and are posted on the TEO website www.electoral.tas.gov.au.

2000 Election timetable

Notice of election published	Saturday 16 September
Electoral rolls closed	6 pm Thursday 21 September
Nomination period	25 September— 12 noon on 4 October
Nominations closed	12 noon Wednesday 4 October
Nominations announced & draw for ballot paper positions	12 noon Thursday 5 October
Ballot material delivered to electors	17–20 October
Polling period	17–31 October
Close of poll	10 am Tuesday 31 October

Casual vacancies

Casual vacancies are filled by recount where possible, unless the vacancy occurs within 6 months of a forthcoming election. Only unelected candidates from the relevant election may contest a recount. A candidate elected at a recount serves until the next council election. If a recount is not possible, a by-election is held—with the candidate elected to serve for the remainder of the term of office of the original councillor.

Elector polls

A council may hold an elector poll on any issue it determines. It may also be required to hold an elector poll following petitions from electors in accordance with Part 6 of the Act. A council is not bound by the result of an elector poll.

Electoral system

Voting in Tasmanian local government elections is not compulsory.

Elections for councillor positions are conducted using a system modelled on the Hare-Clark method of proportional representation used in Tasmanian House of Assembly elections.

Mayoral and deputy mayoral elections use a preferential system similar to that used for Tasmanian Legislative Council and Federal House of Representatives elections.

Report on the 2000 Tasman Council Election

Elections were held for the positions of Mayor and Deputy Mayor for 2 year terms and 4 Councillors for 4 year terms.

2133 Tasman electors were enrolled for the 2000 elections, comprising 1556 (72.94%) from the State House of Assembly roll and 577 (27.05%) from the General Manager's roll.

71.68% of Tasman electors returned their ballot papers in comparison with 57.78% statewide.

Candidates at the 2000 elections

Mayor		Councillors	
★ NOYE, Neil*	Nubeena	ALEXANDER, Gary	White Beach
SELF, Roger	Eaglehawk Neck	BRIGGS, Allen Lloyd*	Port Arthur
		★ HEYWARD, Keith*	Koonya
		KANG-SCHEIT, Peter V	Premaydena
		★ MANSFIELD, Dennis*	Nubeena
		★ SELF, Roger*	Eaglehawk Neck
		★ WIGGINS, Bruce Raymond	Nubeena
Deputy Mayor			
HEYWARD, Keith	Koonya		
MANSFIELD, Dennis	Nubeena		
★ WILSON, Peter J*	Taranna		

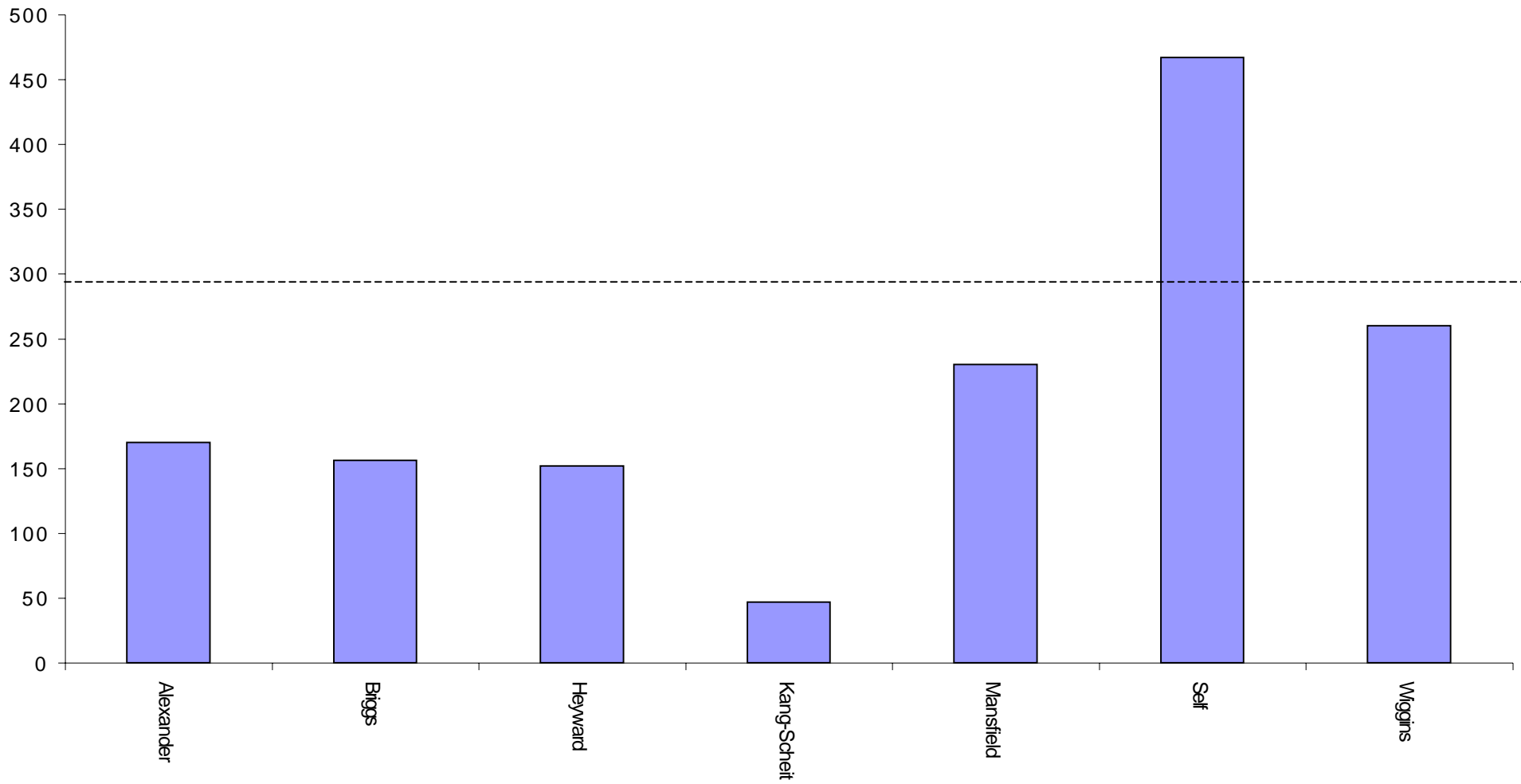
★ denotes elected candidate

* denotes seeking re-election

Tasman Councillors following the 2000 elections

Mayor	9 Councillors	
<i>term ends 2002</i>	<i>term ends 2004</i>	<i>term ends 2002</i>
NOYE Neil	SELF Roger	NOYE Neil
	WIGGINS Bruce Raymond	DOBNER Guy
Deputy Mayor	MANSFIELD Dennis	WILSON Peter J
<i>term ends 2002</i>	HEYWARD Keith	NOYE Kath
WILSON Peter J		FAZACKERLEY Joan

Tasman Council - 2000 Councillor first preferences



Councillor distribution of preferences

Tasman Council

Polling closed at 10 am Tuesday 31 October 2000

Number to be elected : 4

Returning Officer : Ms Maree Ward

Electors enrolled : 2 133

Declarations returned : 1 529

Response 71.68%

Declarations rejected : 28

Declarations admitted : 1 501

Rejection rate : 1.83%

Ballot paper adjustment : 0

Total ballot papers : 1 501

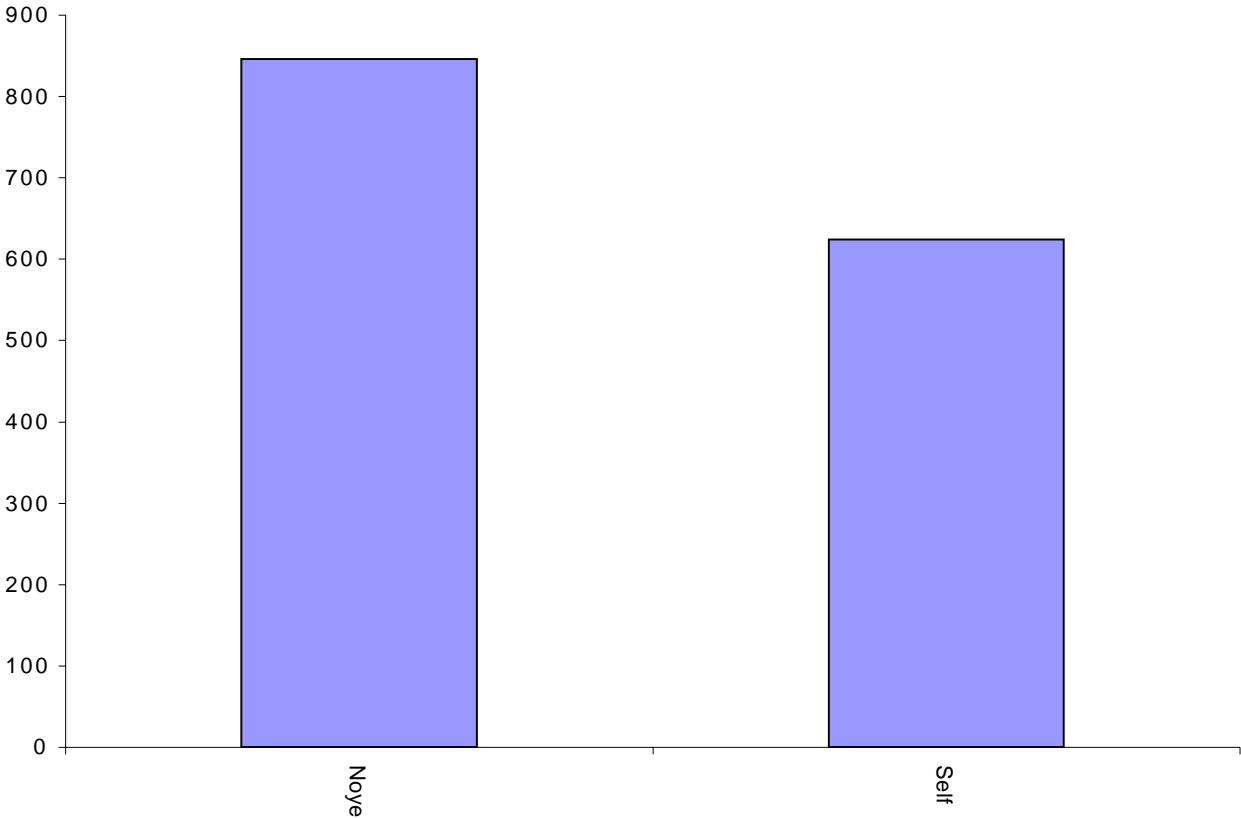
Formal votes : 1 482

Informal ballot papers : 19

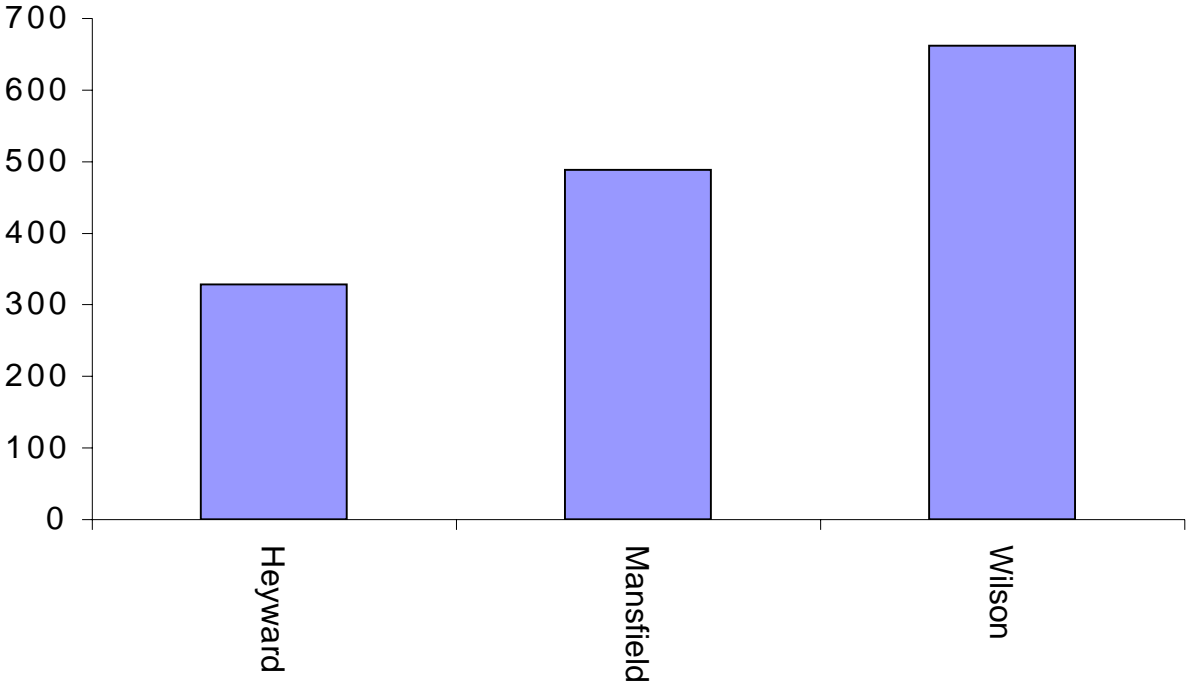
Informality rate : 1.26%

		CANDIDATES						Quota = 297				
		ALEXANDER	BRIGGS	HEYWARD	KANG-SCHEIT	MANSFIELD	SELF	WIGGINS	Exhausted	Loss (Gain) by Fraction	Total Votes	Remarks
Count 1	Total	170.00	156.00	152.00	47.00	230.00	467.00	260.00			1 482.00	SELF elected 1
Count 2	Votes transferred	22.56	21.84	43.68	7.28	43.31	- 170.00	31.30		0.03		SELF's surplus distributed
	Progress totals	192.56	177.84	195.68	54.28	273.31	297.00	291.30		0.03	1 482.00	
Count 3	Votes transferred	4.00	9.00	7.00	- 47.00	16.00		11.00		0.00		KANG-SCHEIT part excluded
	Progress totals	196.56	186.84	202.68	7.28	289.31	297.00	302.30		0.03	1 482.00	WIGGINS elected 2
Count 4	Votes transferred	2.54	1.82	2.18	- 7.28	0.72				0.02		KANG-SCHEIT fully excluded
	Progress totals	199.10	188.66	204.86	0.00	290.03	297.00	302.30		0.05	1 482.00	
Count 5	Votes transferred	1.44	1.44	0.48		1.92		- 5.30		0.02		WIGGINS' surplus distributed
	Progress totals	200.54	190.10	205.34		291.95	297.00	297.00		0.07	1 482.00	
Count 6	Votes transferred	42.00	- 165.00	74.00		49.00				0.00		BRIGGS part excluded
	Progress totals	242.54	25.10	279.34		340.95	297.00	297.00		0.07	1 482.00	MANSFIELD elected 3
Counts 7 to 8	Votes transferred	10.06	- 25.10	13.10					1.93	0.01		BRIGGS fully excluded
	Progress totals	252.60	0.00	292.44		340.95	297.00	297.00	1.93	0.08	1 482.00	
Count 9	Votes transferred	16.14		26.01		- 43.95			1.79	0.01		MANSFIELD's surplus distributed
	Progress totals	268.74		318.45		297.00	297.00	297.00	3.72	0.09	1 482.00	HEYWARD elected 4

Tasman Council - 2000 Mayor first preferences



Tasman Council - 2000 Deputy Mayor first preferences



Tasman Council

Polling closed at 10 am Tuesday 31 October 2000

Returning Officer : Ms Maree Ward

Electors enrolled : 2 133

Declarations returned : 1 528

Response 71.64%

Mayor

Ballot paper adjustment : 2

Total ballot papers : 1 498

Formal votes : 1 470

Informal ballot papers : 28

Informality Rate : 1.86%

		CANDIDATES		Total Votes	Remarks
		Noye	Self		
Count 1	Total	846	624	1 470	Noye Elected

Deputy Mayor

Ballot paper adjustment : 0

Total ballot papers : 1500

Formal votes : 1 477

Informal ballot papers : 23

Informality Rate : 1.53%

		CANDIDATES			Exhausted Votes	Total Votes	Remarks
		Heyward	Mansfield	Wilson			
Count 1	Total	328	488	662		1 478	
Count 2	Votes transferred	- 328	133	156	39		Heyward excluded
	Progress totals	0	621	818	39	1 478	Wilson Elected